

YEAR 2012

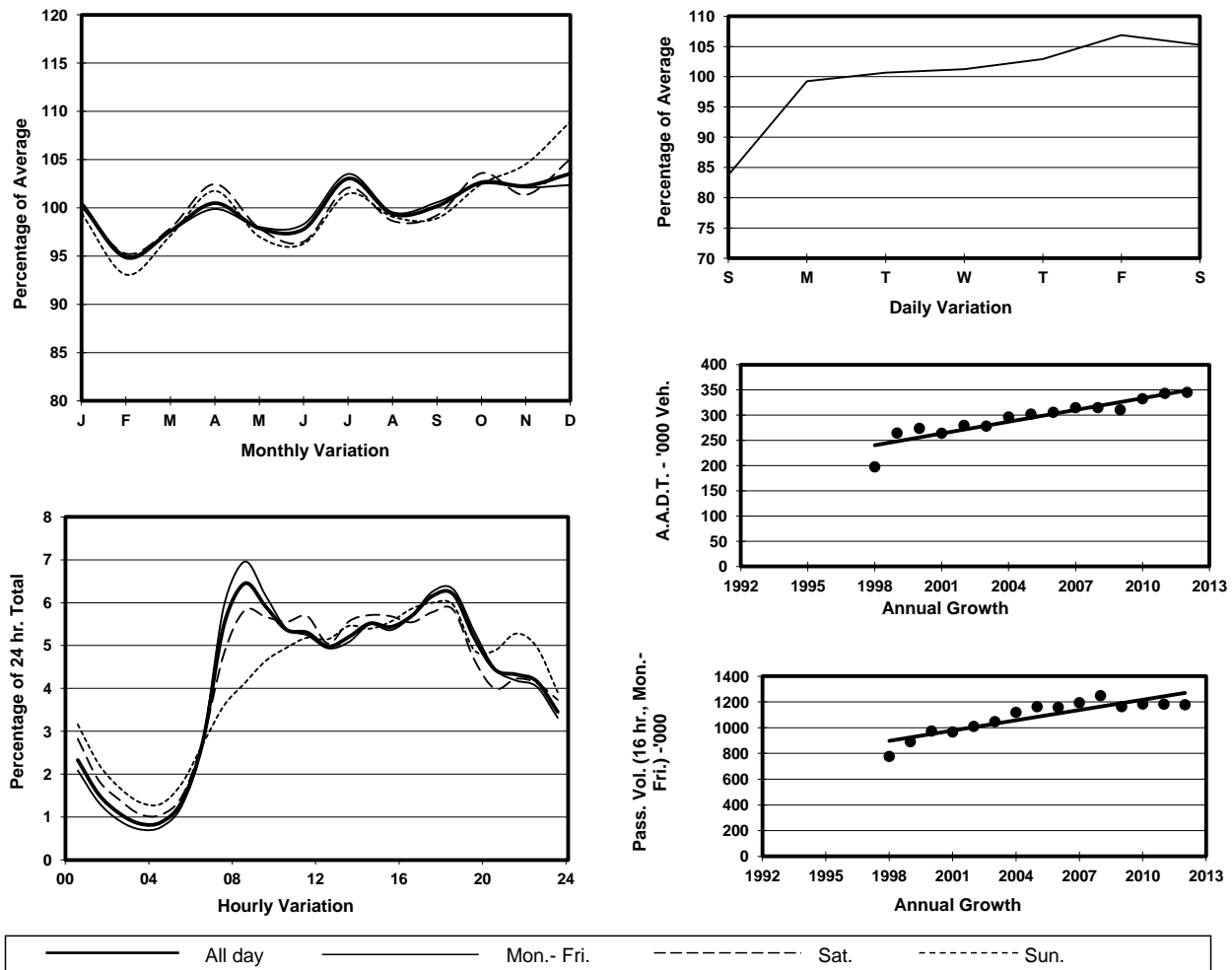
Location

Tsing Yi External Cordon(Tsing Yi Area Boundary)

Stations on Cordon/Screenline

5018, 5027, 5033, 5034, 5038, 6219 and 6221

1. TRAFFIC FLOW VARIATION AND GROWTH



2. TRAFFIC CHARACTERISTICS (BY DIRECTION)

Parameter	All - Day	Mon. - Fri.	Sat.	Sun.
IN BOUND				
A.A.D.T.	165450	170300	176500	139920
R 12 / 24 - %	69.1	70.3	68.3	62.7
R 16 / 24 - %	86.1	87.1	84.2	82.2
AM Peak Hour	0800-0900	0800-0900	0800-0900	0900-1000
One-way flow at AM peak hour	11200	12300	11430	6680
T - % (AM)	-	23.6	-	-
PM Peak Hour	1700-1800	1700-1800	1700-1800	1800-1900
One-way flow at PM peak hour	10430	10940	10440	8600
T - % (PM)	-	26.4	-	-
Prop.of commercial vehicles - 16 hr.	-	24.7	-	-
OUT BOUND				
A.A.D.T.	179580	185130	188890	153110
R 12 / 24 - %	66.3	67.4	65.3	61.1
R 16 / 24 - %	85.4	86.5	83.3	81.5
AM Peak Hour	0800-0900	0800-0900	0900-1000	0900-1000
One-way flow at AM peak hour	11040	12420	10240	6910
T - % (AM)	-	22	-	-
PM Peak Hour	1800-1900	1800-1900	1800-1900	1700-1800
One-way flow at PM peak hour	11220	11770	11520	9090
T - % (PM)	-	19.5	-	-
Prop.of commercial vehicles - 16 hr.	-	23.3	-	-

3. OTHER INFORMATION AND COMMENT

Tsing Yi External Cordon
Year 2012

4. Vehicle classification and occupancy - Monday to Friday

Time		Class of vehicle									
		Motor Cycle	Private Car	Taxi	Private LB	PLB	Goods veh.		Non Fr. Bus	Fr. Bus	
							Light	M & H		SD	DD
0700-0800	Pro	2.6	34.2	21.0	1.0	2.1	15.6	12.6	6.2	0.1	4.8
	Ocp	1.1	1.5	2.0	5.7	11.3	1.6	1.2	21.5	17.4	53.2
0800-0900 Peak Hour	Pro	2.0	41.5	15.9	0.6	1.7	15.5	13.6	4.9	0.1	4.2
	Ocp	1.1	1.5	2.1	3.7	11.9	1.6	1.2	25.3	22.2	56.5
0900-1000	Pro	1.5	35.8	14.8	0.7	1.6	20.9	17.4	2.9	0.1	4.3
	Ocp	1.1	1.5	2.0	2.5	11.4	1.5	1.2	10.7	12.4	30.4
1000-1100	Pro	1.1	32.1	14.9	0.9	1.6	22.3	20.2	2.7	0.1	4.0
	Ocp	1.0	1.5	2.1	2.4	9.7	1.5	1.2	10.3	9.6	26.5
1100-1200	Pro	0.9	32.3	15.2	0.6	1.5	22.3	20.4	2.7	0.1	3.9
	Ocp	1.0	1.6	2.2	2.3	8.8	1.5	1.2	13.1	8.0	25.4
1200-1300	Pro	0.9	33.4	15.7	0.9	1.8	20.0	19.1	4.0	0.1	4.1
	Ocp	1.1	1.6	2.3	4.6	9.2	1.5	1.2	11.0	8.4	24.1
1300-1400	Pro	1.1	31.2	15.3	0.5	1.7	22.6	20.0	3.4	0.1	4.2
	Ocp	1.1	1.6	2.2	3.0	10.0	1.5	1.2	10.8	5.2	26.5
1400-1500	Pro	1.5	34.5	13.4	0.7	1.4	22.4	19.1	3.2	0.1	3.8
	Ocp	1.1	1.7	2.2	1.6	11.0	1.5	1.2	10.9	8.9	24.7
1500-1600	Pro	1.1	35.2	12.9	1.0	1.4	19.8	20.8	3.7	0.1	4.0
	Ocp	1.1	1.6	2.3	3.6	10.1	1.5	1.2	14.6	6.0	23.4
1600-1700	Pro	1.2	33.8	14.8	1.3	1.4	20.4	18.6	4.5	0.1	4.0
	Ocp	1.1	1.6	2.2	3.9	11.9	1.6	1.2	10.2	9.2	29.7
1700-1800	Pro	1.9	37.0	14.7	0.9	1.4	18.5	16.6	4.4	0.1	4.4
	Ocp	1.1	1.6	2.1	3.0	13.7	1.6	1.2	14.6	14.5	40.9
1800-1900	Pro	2.2	47.7	13.5	0.5	1.8	14.4	12.0	3.6	0.1	4.3
	Ocp	1.1	1.6	2.4	2.3	15.1	1.5	1.1	19.8	14.7	56.1
1900-2000	Pro	1.5	50.5	16.3	0.3	2.2	10.9	9.2	4.2	0.1	4.8
	Ocp	1.1	1.5	2.2	3.1	13.1	1.4	1.1	21.2	13.8	43.8
2000-2100	Pro	1.3	46.3	21.3	0.1	2.2	8.8	10.5	4.6	0.1	4.9
	Ocp	1.1	1.5	2.2	1.4	10.0	1.4	1.1	16.2	12.8	34.1
2100-2200	Pro	2.0	43.9	25.8	0.2	2.0	8.2	9.4	3.6	0.1	4.9
	Ocp	1.1	1.7	2.1	2.6	9.6	1.5	1.1	9.8	9.2	31.4
2200-2300	Pro	1.7	46.3	26.0	0.3	2.0	7.4	8.2	2.5	0.1	5.6
	Ocp	1.2	1.6	2.1	1.7	8.8	1.4	1.1	12.3	6.1	29.1
16 hours	Pro	1.5	38.3	16.6	0.7	1.7	17.2	15.6	3.9	0.1	4.4
	Ocp	1.1	1.6	2.2	3.3	11.1	1.5	1.2	15.6	11.4	36.0

Legend

- Pro.** Proportion of vehicles in % (Sum may not add up to 100% due to figure rounding)
- Ocp.** Average occupancy of vehicles
- M & H** Medium and Heavy